

# GIGABOY

HB-Nr. 499169 • 276000361913341

05.11.2019 aAa: 243 Beta casein: A1A2 Kappa casein: AB ZW: gen.ZW 04.2026 Breeder: Cordes

## Pedigree

GIGABYTE v. GYMNAST  
NOLA VG-86

KERRIGAN v. KINGBOY  
NO PROBLEM GP-81

BALISTO  
PRECIOUS VG-88

**Total index** **RZ€ 694** **RZG 117**

**Production** **Si. 83%** **RZM 117**

Milk	+1401		
Fat %	-0,23	Protein %	-0,11
Fat kg	+27	Protein kg	+35

## Functionality

RZN	Productive Life	98
RZS	Somatic cell score	115
RZR	Daughter Pregnancy Rate	101
RZPersistenz	Persistenz	112
RZD	Milking Speed	105
KVd	Sire calving ease	102
RZKm	Daughter calving ease	100
RZOeko	Ecological Index	107
RZFE1	Feed Efficiency	95
RZRobot	RZRobot	111

## Health

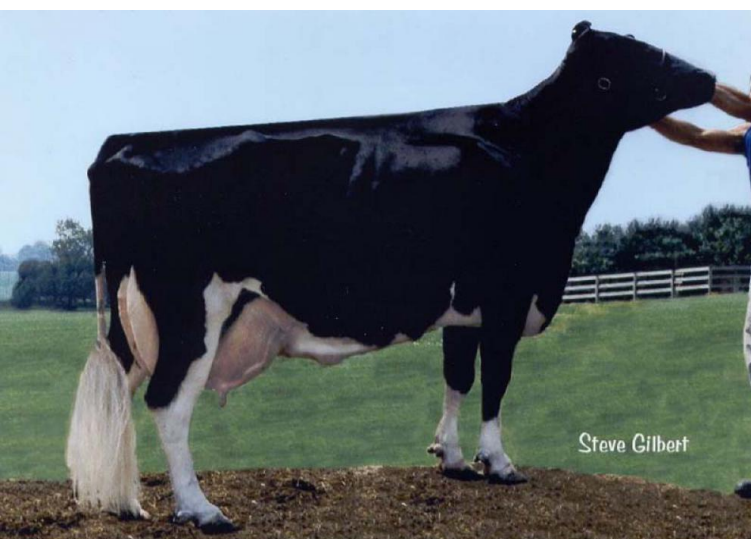
**RZGesund 104**

RZEuterfit	Udder health	104
RZKlauen	Claw health	102
RZRepro	Fertility	93
RZMetabol	Metabolic stability	105
DDcontrol	DDcontrol	98
RZKälberfit	Calves fitness	106

## Exterieur

**RZE 120**

Dairy Character	110
Body Composite	104
Feet & Legs	90
Udder	131



Stammkuh: Wesswod-HC Rudy Missy EX-92



GGM: Sandy-Valley Nu Precious VG-88

GIGABOY, the Gigabyte son from the Rudy Missy family, can be described as an all-round sire with a focus on performance, health and conformation thanks to his breeding value profile. With the combination of more than 1254 kg milk with slightly negative components, very good milkability with excellent udder health, high longevity and an RZhealth of 116, he promises problem-free, productive cows that also know how to convince in conformation with RZE 126. In terms of conformation, the very wide, optimally sloped rumps and the very high, wide and firmly attached udders stand out. The slightly longer strokes are not placed too narrowly and promise very good suitability for robots. Note the steeper rear leg angle - with very high heels - and the somewhat coarser bone structure. RZ Robot 128.

## Linear

Merkmal	ZW	Tendenz	88	112	124	Tendenz
Stature	118	small				tall
Rip structure	108	tight rib				open rib
Body depth	91	shallow				deep
Strength	99	frail				strong
Rump angle	102	high pins				sloped
Thurl width	118	narrow				wide
Rear legs side view	90	posty				sickled
Foot angle	113	flat				steep
Hock quality	83	coarse				dry
Rear legs rear view	96	hocked in				parallel
Front feet orientation	88	hocked in				parallel
Locomotion	92	poor				good
Rear udder height	136	deep				high
Udder cleft	101	weak				strong
Front teat placement	100	wide				close
Rear teat placement	92	wide				close
Fore udder attachment	116	loose				strong
Udder balance	118	ht				vt
Udder depth	128	deep				high
Teat length	107	short				long