

FRANK PP RED

HB-Nr. 499175 • 276000362263479

17.04.2020 aAa: 342 Beta casein: A1A2 Kappa casein: BB ZW: gen.ZW 04.2025 Breeder: Göpel

Pedigree

SOLITAIR P RED v. SALVATORE RC BORN P RC v. BATTLECRY DEKO P RED
 FIRELLA PP RED GP-84 FIRE P RED VG-85 FEE P GP-84
 1. 100 T. 3.612 4.26 154 3.27 116 4. 14.690 3.76 552 3.37 495

Total index RZ€ 1272 RZG 127

Production	Si. 82%	RZM 124
Milk	+1143	
Fat %	-0,11	Protein % +0,09
Fat kg	+35	Protein kg +49

Functionality

RZN	Productive Life	111
RZS	Somatic cell score	110
RZR	Daughter Pregnancy Rate	100
RZPersistenz	Persistenz	113
RZD	Milking Speed	105
KVd	Sire calving ease	103
RZKm	Daughter calving ease	99
RZOeko	Ecological Index	122
RZFE1	Feed Efficiency	84

Health

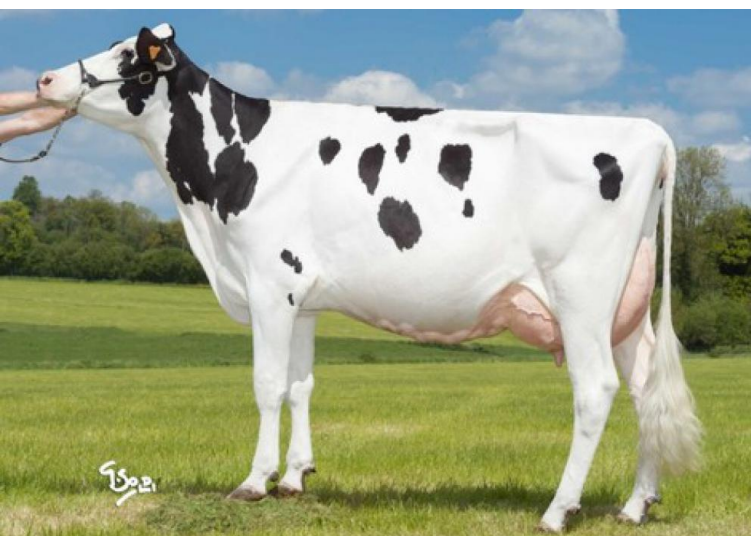
RZGesund 114

RZEuterfit	Udder health	108
RZKlauen	Claw health	106
RZRepro	Fertility	109
RZMetabol	Metabolic stability	106
DDcontrol	DDcontrol	104
RZKälberfit	Calves fitness	98

Exterieur

RZE 106

Dairy Character	95
Body Composite	104
Feet & Legs	102
Udder	108



3GM: Fily-Sher RDC VG-86



GG Frank PP Red

Frank PP Red is an attractive, homozygous polled sire and goes back to Glen Drummond Splendor VG-86 and thus to the very successful family of Sympatico, Durham Red or MR Savage. His granddam TWR Fire P Red produced in 4th lactation. (305): 14,690 kg milk and over 1,000 R+D kg. Frank himself convinces with a very complete profile with high milk yield, very good health values, positive milkability with good udder health and a long useful life. In terms of conformation, he convinces with an attractive linear with good feet and legs and udder transmission as well as a little more strength and body depth with an average height. Frank is suitable for heifer insemination and is testing Kappa Casein BB. RZRobot is 111.

Linear

Merkmal	ZW	Tendenz	88	112	124	Tendenz
Stature	94	small				tall
Rip structure	99	tight rib				open rib
Body depth	102	shallow				deep
Strength	106	frail				strong
Rump angle	95	high pins				sloped
Thurl width	105	narrow				wide
Rear legs side view	105	posty				sickled
Foot angle	103	flat				steep
Hock quality	95	coarse				dry
Rear legs rear view	101	hocked in				parallel
Front feet orientation	97	hocked in				parallel
Locomotion	103	poor				good
Rear udder height	99	deep				high
Udder cleft	98	weak				strong
Front teat placement	100	wide				close
Rear teat placement	110	wide				close
Fore udder attachment	114	loose				strong
Udder balance	114	ht				vt
Udder depth	109	deep				high
Teat length	101	short				long