

# DAMASKUS

HB-Nr. 499159 • 276000362351565

10.10.2019 aAa: 432 Beta casein: A1/A2 Kappa casein: AB ZW: gen.ZW 04.2025 Breeder: Reinermann

## Pedigree

┌ DURABLE v. CHARLEY  
└ MOK BEAUTY VG-85  
1.305 13578 4.08 554 3.73 506
┌ GYMNAST v. DOORSOPEN  
└ MOK BELLE VG-86  
1.133 5.155 4.17 215 3.36 173
┌ PENLEY  
└ BONNY VG-88

**Total index** **RZ€ 1015** **RZG 116**

Production	Si. 82%	RZM 124
Milk	+732	
Fat %	+0,03	Protein % +0,22
Fat kg	+32	Protein kg +49

## Functionality

RZN	Productive Life	106
RZS	Somatic cell score	94
RZR	Daughter Pregnancy Rate	91
RZPersistenz	Persistenz	123
RZD	Milking Speed	116
KVd	Sire calving ease	110
RZKm	Daughter calving ease	102
RZOeko	Ecological Index	112
RZFE1	Feed Efficiency	89
RZRobot	RZRobot	110

## Health

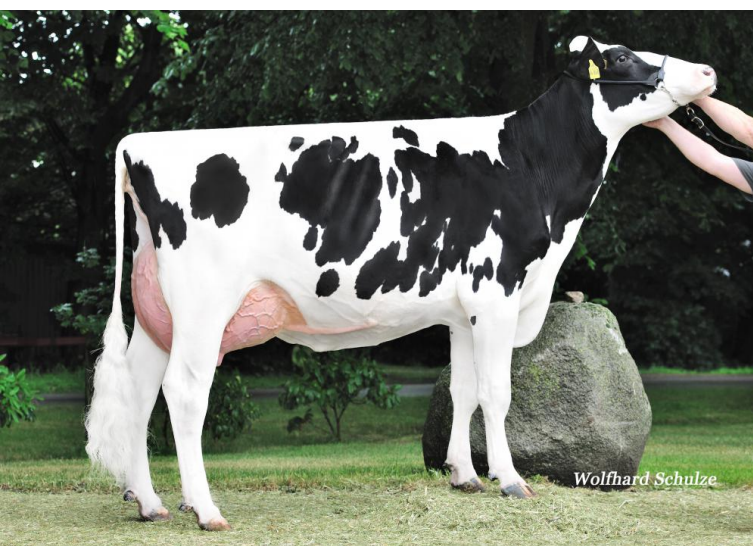
**RZGesund 98**

RZEuterfit	Udder health	92
RZKlauen	Claw health	110
RZRepro	Fertility	98
RZMetabol	Metabolic stability	102
DDcontrol	DDcontrol	107
RZKälberfit	Calves fitness	106

## Exterieur

**RZE 95**

Dairy Character	96
Body Composite	87
Feet & Legs	100
Udder	100



Wolfhard Schulze

3GM: MOK Belly VG-87



Alex Arkink

RR Damaskus

RR Damaskus is a high Durable son from a new but deep cow family with six generations of VG dams in a row. Damaskus is an all-round sire with high milk production and positive protein percentages as well as good fitness values and longevity. Milkability is very high at 116 and udder health is good, as are the overall health values, with strengths especially in terms of hoof health and Mortellaro resistance. Damaskus promises a balanced conformation with slightly sloping rumps, functional feet and legs with parallel legs and high heels, as well as well attached udders with longer, centrally placed teats. Damaskus is suitable for heifer insemination and the maternal calving ease of the daughters is rated at 105 on a high level

## Linear

Merkmal	ZW	Tendenz	88	112	124	Tendenz
Stature	98	small				tall
Rip structure	98	tight rib				open rib
Body depth	87	shallow				deep
Strength	91	frail				strong
Rump angle	109	high pins				sloped
Thurl width	95	narrow				wide
Rear legs side view	94	posty				sickled
Foot angle	114	flat				steep
Hock quality	86	coarse				dry
Rear legs rear view	104	hocked in				parallel
Front feet orientation	85	hocked in				parallel
Locomotion	100	poor				good
Rear udder height	98	deep				high
Udder cleft	105	weak				strong
Front teat placement	107	wide				close
Rear teat placement	101	wide				close
Fore udder attachment	96	loose				strong
Udder balance	89	ht				vt
Udder depth	100	deep				high
Teat length	107	short				long