

# MUSICAL PP RED

HB-Nr. 499340 • 276000365457502

12.02.2024 aAa: 234 Beta casein: A1A2 Kappa casein: BE ZW: gen.ZW 04.2025 Breeder: Schlösser

## Pedigree

MO RED PP v. MCDONALD P  
RED ROXY P

CARTOON P v. ALTATOP RED  
SAMBUCA VG-85

ALTAC RED  
SMP 6330 VG-87

## Total index

RZ€ 2553

RZG 150

## Production

Si. 78%

RZM 136

Milk	+1019		
Fat %	+0,57	Protein %	+0,13
Fat kg	+101	Protein kg	+48

## Functionality

RZN	Productive Life	125
RZS	Somatic cell score	112
RZR	Daughter Pregnancy Rate	112
RZPersistenz	Persistenz	108
RZD	Milking Speed	108
KVd	Sire calving ease	110
RZKm	Daughter calving ease	117
RZOeko	Ecological Index	142
RZFE1	Feed Efficiency	96

## Health

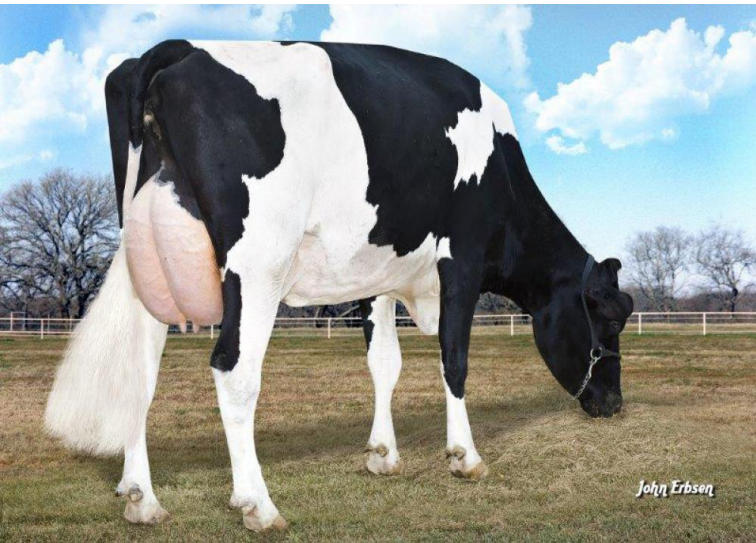
RZGesund 123

RZEuterfit	Udder health	113
RZKlauen	Claw health	115
RZRepro	Fertility	111
RZMetabol	Metabolic stability	108
DDcontrol	DDcontrol	118
RZKälberfit	Calves fitness	112

## Exterieur

RZE 123

Dairy Character	128
Body Composite	107
Feet & Legs	105
Udder	117



6 M: Morningview Super Roxy EX-90



Musical PP Red

Musical PP Red from the Schlösser breeding farm plays a special role among the highest PP sires in the country, as Solitaire P and his sons are not represented in his pedigree and he can therefore be mated very well to the corresponding daughters. Musical's great-granddam is the outstanding Simplicity daughter Monrningview SMP 6330 VG-87, who goes back to the Roxy family and produced almost 1,500 R+D kg in her 3rd lactation (19,201 4.60 884 3.11 598).

Musical PP himself offers an excellent complete package with good production with high components, very good fitness values with high daughter fertility, good cell values with positive milkability as well as consistently good health values with very good calf fitness. In addition, Musical convinces with excellent conformation with a lot of body depth, wide, sloping rumps and very good feet&legs and udder inheritance. Musical can be used well for heifer inseminations and also convinces with very good maternal calving traits.

## Linear

Merkmal	ZW	Tendenz	88	112	124	Tendenz
Stature	125	small				tall
Rip structure	116	tight rib				open rib
Body depth	106	shallow				deep
Strength	102	frail				strong
Rump angle	100	high pins				sloped
Thurl width	106	narrow				wide
Rear legs side view	95	posty				sickled
Foot angle	107	flat				steep
Hock quality	95	coarse				dry
Rear legs rear view	108	hocked in				parallel
Front feet orientation	84	hocked in				parallel
Locomotion	103	poor				good
Rear udder height	117	deep				high
Udder cleft	107	weak				strong
Front teat placement	106	wide				close
Rear teat placement	112	wide				close
Fore udder attachment	110	loose				strong
Udder balance	104	ht				vt
Udder depth	115	deep				high
Teat length	96	short				long