

BOLERO RED TÖ.

HB-Nr. 682248 • 276000538527716

03.11.2014 aAa: 432 Beta casein: A2/A2 Kappa casein: AA ZW: gen.ZW 04.2026 Breeder: A. Horstick

Pedigree

BREKEM RC v. BOOKEM
JOLIJN 3 VG-86

STELLANDO v. FIDELITY
JOLIJN RC VG-85

ROPPA
JEANINE

Total index **RZ€ 575** **RZG 108**

Production **Si. 95%** **RZM 122**

Milk	+963		
Fat %	-0,15	Protein %	+0,14
Fat kg	+23	Protein kg	+48

Functionality

RZN	Productive Life	98
RZS	Somatic cell score	81
RZR	Daughter Pregnancy Rate	93
RZPersistenz	Persistenz	96
RZD	Milking Speed	85
KVd	Sire calving ease	103
RZKm	Daughter calving ease	105
RZOeko	Ecological Index	105
RZFE1	Feed Efficiency	102

Health

RZGesund 91

RZEuterfit	Udder health	89
RZKlauen	Claw health	93
RZRepro	Fertility	100
RZMetabol	Metabolic stability	104
DDcontrol	DDcontrol	94
RZKälberfit	Calves fitness	100

Exterieur

RZE 98

Dairy Character	109
Body Composite	100
Feet & Legs	107
Udder	88



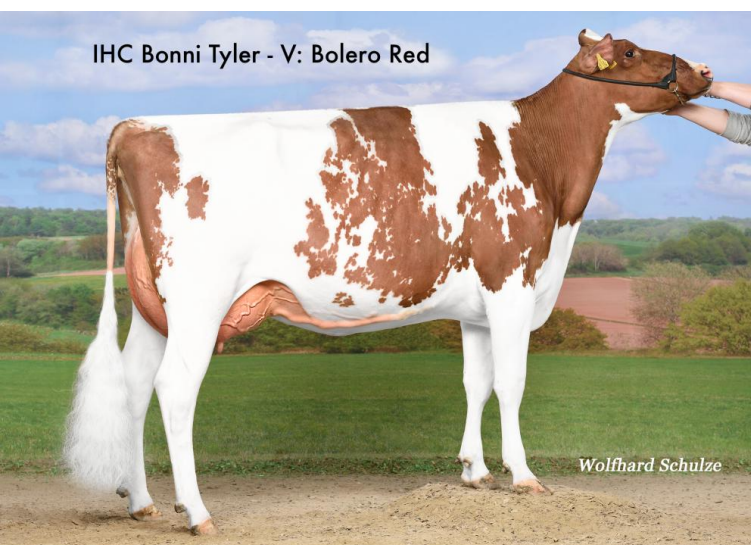
HOR Bolero Red

Bolero Red has been at a high level for years and is by far the oldest bull among the top 10 daughter-proven Rbt. sires in Germany and also in Poland, where he was used a lot, he is among the top 5 of the top list. Bolero has an alternative pedigree for Red Holstein breeding and inherits high production with excellent protein values. In addition, he convinces with very good daughter fertility, a decent longevity and a functional conformation with very good feet and legs inheritance. Bolero is good for heifer insemination and tests beta-casein A2/A2. The daughters who have calved in the meantime show the expected willingness to perform with very good milkability (according to reports from practice) and have a conformation that leaves nothing to be desired, as a prime example the Bolero - daughter IHC Bonni Tyler VG 85 (84/86/84 /86) as third in class at the RSH - Show in Neumünster convinced! The daughters are now in their second lactation and have developed into strong, wide and open bodied, hard working, milking cows.

Linear

Merkmal	ZW	Tendenz	88	112	124	Tendenz
Stature	94	small				tall
Rip structure	113	tight rib				open rib
Body depth	101	shallow				deep
Strength	106	frail				strong
Rump angle	94	high pins				sloped
Thurl width	93	narrow				wide
Rear legs side view	102	posty				sickled
Foot angle	101	flat				steep
Hock quality	106	coarse				dry
Rear legs rear view	109	hocked in				parallel
Front feet orientation	102	hocked in				parallel
Locomotion	102	poor				good
Rear udder height	100	deep				high
Udder cleft	103	weak				strong
Front teat placement	85	wide				close
Rear teat placement	94	wide				close
Fore udder attachment	91	loose				strong
Udder balance	76	ht				vt
Udder depth	85	deep				high
Teat length	98	short				long

IHC Bonni Tyler - V: Bolero Red



Tochter: IHC Bonni Tyler VG 85