

MERLO PP RF

HB-Nr. 499087 • 276000666975162

05.06.2016 aAa: 243 Beta casein: A1/A2 Kappa casein: AB ZW: gen. ZW 4.2023 Breeder: GG, Herleshausen

Pedigree

MILFORD P v. STYLE P
DONNA P RED

KANU P v. COLT P
SELAYO724 GP84

SELAYO
DIVA VG87

Total index **RZ€ 531** **RZG 110**

Production **Si. 78%** **RZM 107**

| | | | |
|--------|-------|------------|-------|
| Milk | +938 | | |
| Fat % | -0,32 | Protein % | -0,16 |
| Fat kg | +1 | Protein kg | +14 |

Functionality

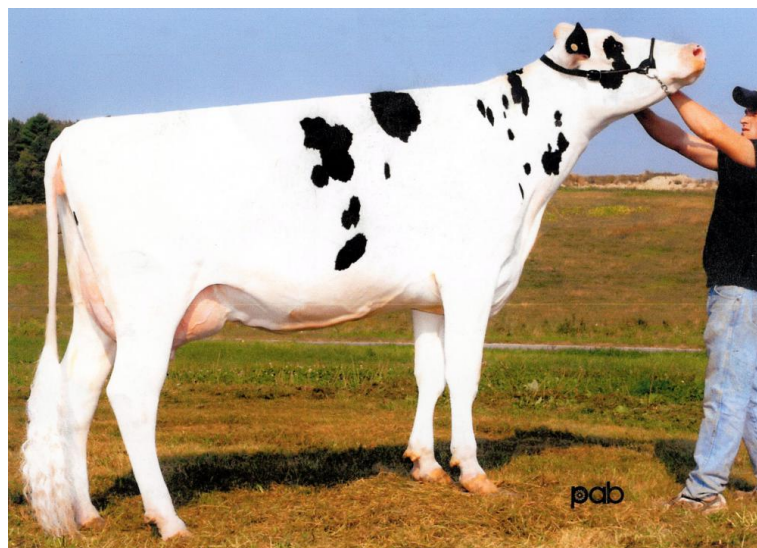
| | | |
|--------------|-------------------------|-----|
| RZN | Productive Life | 107 |
| RZS | Somatic cell score | 106 |
| RZR | Daughter Pregnancy Rate | 100 |
| RZPersistenz | Persistenz | 105 |
| RZD | Milking Speed | 96 |
| KVd | Sire calving ease | 108 |
| RZKm | Daughter calving ease | 98 |
| RZRobot | RZRobot | 104 |

Health **RZGesund 108**

| | | |
|-------------|---------------------|-----|
| RZEuterfit | Udder health | 102 |
| RZKlauen | Claw health | 103 |
| RZRepro | Fertility | 104 |
| RZMetabol | Metabolic stability | 107 |
| DDcontrol | DDcontrol | 101 |
| RZKälberfit | Calves fitness | 110 |

Exterieur **RZE 97**

| | |
|-----------------|-----|
| Dairy Character | 109 |
| Body Composite | 80 |
| Feet & Legs | 105 |
| Udder | 99 |



UGM: Kay-Ben O-Man Deedee VG-87

Merlo PP is homozygous polled, red carrier and goes back to the good US cow family of Kay-Ben Durham Diedra EX-93. In addition to good fitness and good health values, Merlo transmits high milk production, a functional conformation with a narrow physique and clearly sloping rumps. He is suitable for heifer insemination and is also recommended for AMS farms with an RZRobot of 104.

Linear

| Merkmal | ZW | Tendenz | 88 | 112 | 124 | Tendenz |
|------------------------|-----|-----------|----|-----|-----|----------|
| Stature | 103 | small | | | | tall |
| Rip structure | 96 | tight rib | | | | open rib |
| Body depth | 89 | shallow | | | | deep |
| Strength | 77 | frail | | | | strong |
| Rump angle | 117 | high pins | | | | sloped |
| Thurl width | 89 | narrow | | | | wide |
| Rear legs side view | 93 | posty | | | | sickled |
| Foot angle | 100 | flat | | | | steep |
| Hock quality | 112 | coarse | | | | dry |
| Rear legs rear view | 94 | hocked in | | | | parallel |
| Front feet orientation | 80 | hocked in | | | | parallel |
| Locomotion | 102 | poor | | | | good |
| Rear udder height | 112 | deep | | | | high |
| Udder cleft | 99 | weak | | | | strong |
| Front teat placement | 80 | wide | | | | close |
| Rear teat placement | 99 | wide | | | | close |
| Fore udder attachment | 98 | loose | | | | strong |
| Udder balance | 93 | ht | | | | vt |
| Udder depth | 99 | deep | | | | high |
| Teat length | 104 | short | | | | long |