

ANTON PP RED

HB-Nr. 499324 • 276000667990605

25.10.2023 aAa: - Beta casein: A1A2 Kappa casein: AB ZW: gen.ZW 12.2024 Breeder: H. Weckesser

Pedigree

STEREO P v. SANDRO P

AROS PP RED VG-85

100 T. 3.372 4,36 147 3,26 110

MARS P v. MARSDEN P

AMBER PP RED VG-86

1. 11.486 3,26 375 3,53 406

SOLITAIR

AMRA P VG-85

Total index

RZ€ 1859

RZG 144

Production

Si. 73%

RZM 146

| | | | |
|--------|-------|------------|-------|
| Milk | +1757 | | |
| Fat % | +0,11 | Protein % | -0,05 |
| Fat kg | +84 | Protein kg | +55 |

Functionality

| | | |
|------------------|-------------------------|-----|
| RZN | Productive Life | 109 |
| RZS | Somatic cell score | 103 |
| RZR | Daughter Pregnancy Rate | 101 |
| RZPersistenz | Persistenz | 118 |
| RZD | Milking Speed | 100 |
| KVd | Sire calving ease | 106 |
| RZK _m | Daughter calving ease | 99 |
| RZOeko | Ecological Index | 124 |
| RZFE1 | Feed Efficiency | 99 |

Health

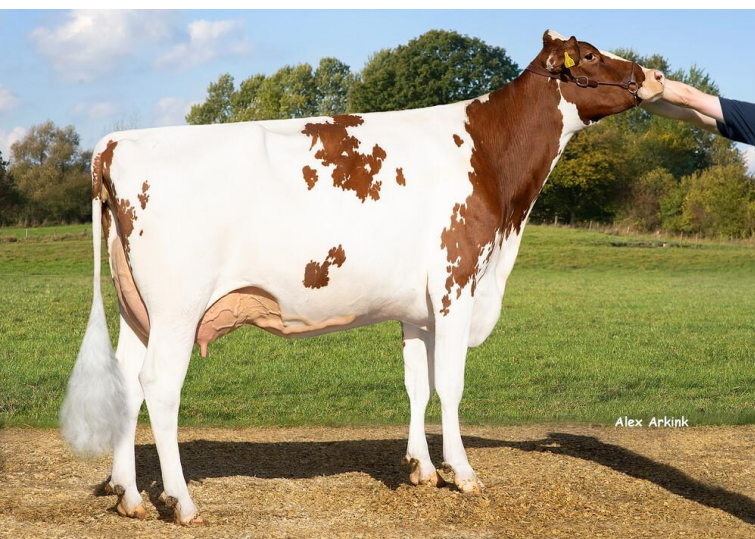
RZGesund 110

| | | |
|-------------|---------------------|-----|
| RZEuterfit | Udder health | 101 |
| RZKlauen | Claw health | 110 |
| RZRepro | Fertility | 105 |
| RZMetabol | Metabolic stability | 106 |
| DDcontrol | DDcontrol | 104 |
| RZKälberfit | Calves fitness | 95 |

Exterieur

RZE 126

| | |
|-----------------|-----|
| Dairy Character | 128 |
| Body Composite | 106 |
| Feet & Legs | 109 |
| Udder | 117 |



V-GM: HaH Zamber VG-86



GM: Tirsvad Amber PP Red VG-86

Anton PP Red is one of the very few Stereo P sons on the market and goes back via Mars Red P to the very successful bull dam Tirsvad Amber PP Red. This is followed by 13 generations of VG and EX classified dams in succession - with the Mascot daughter Dixie-Lee Aspen EX 92 (dam of the udder sire Dixie-Lee Aaron) as figurehead. Anton PP Red is a highly attractive all-rounder and one of the highest PP production sires on the market. In particular, his high milk yield with positive fat percentages combined with very good persistency and positive feed efficiency give him a special position. Anton also convinces with complete functionality and good health values. Anton also impresses with very good conformation with a large frame, wide rumps, solid feet & legs and good udder inheritance. Anton is also suitable for heifer inseminations.

Linear

| Merkmal | ZW | Tendenz | 88 | 112 | 124 | Tendenz |
|------------------------|-----|-----------|----|-----|-----|----------|
| Stature | 118 | small | | | | tall |
| Rip structure | 108 | tight rib | | | | open rib |
| Body depth | 111 | shallow | | | | deep |
| Strength | 95 | frail | | | | strong |
| Rump angle | 88 | high pins | | | | sloped |
| Thurl width | 105 | narrow | | | | wide |
| Rear legs side view | 97 | posty | | | | sickled |
| Foot angle | 103 | flat | | | | steep |
| Hock quality | 105 | coarse | | | | dry |
| Rear legs rear view | 102 | hocked in | | | | parallel |
| Front feet orientation | 93 | hocked in | | | | parallel |
| Locomotion | 107 | poor | | | | good |
| Rear udder height | 130 | deep | | | | high |
| Udder cleft | 114 | weak | | | | strong |
| Front teat placement | 89 | wide | | | | close |
| Rear teat placement | 104 | wide | | | | close |
| Fore udder attachment | 106 | loose | | | | strong |
| Udder balance | 120 | ht | | | | vt |
| Udder depth | 109 | deep | | | | high |
| Teat length | 100 | short | | | | long |