

CHARLES

HB-Nr. 499137 • 276001264567033

14.08.2018 aAa: 243 Beta casein: A2A2 Kappa casein: AB ZW: gen.ZW 08.2024 Breeder: Benzin GbR, Templin

Pedigree

CAMERON v. PENMANSHIP
CLARISSA VG-85

BATTLECRY v. BALISTO
CLARA VG-86

SUNKISS
CARIN

Total index **RZ€ 992** **RZG 120**

Production **Si. 76%** **RZM 106**

Milk	+166		
Fat %	-0,04	Protein %	+0,05
Fat kg	+3	Protein kg	+11

Functionality

RZN	Productive Life	121
RZS	Somatic cell score	112
RZR	Daughter Pregnancy Rate	115
RZPersistenz	Persistenz	110
RZD	Milking Speed	102
KVd	Sire calving ease	103
RZKm	Daughter calving ease	106
RZOeko	Ecological Index	124
RZFE1	Feed Efficiency	105

Health **RZGesund 118**

RZEuterfit	Udder health	113
RZKlauen	Claw health	106
RZRepro	Fertility	107
RZMetabol	Metabolic stability	106
DDcontrol	DDcontrol	106
RZKälberfit	Calves fitness	109

Exterieur **RZE 92**

Dairy Character	86
Body Composite	86
Feet & Legs	96
Udder	102

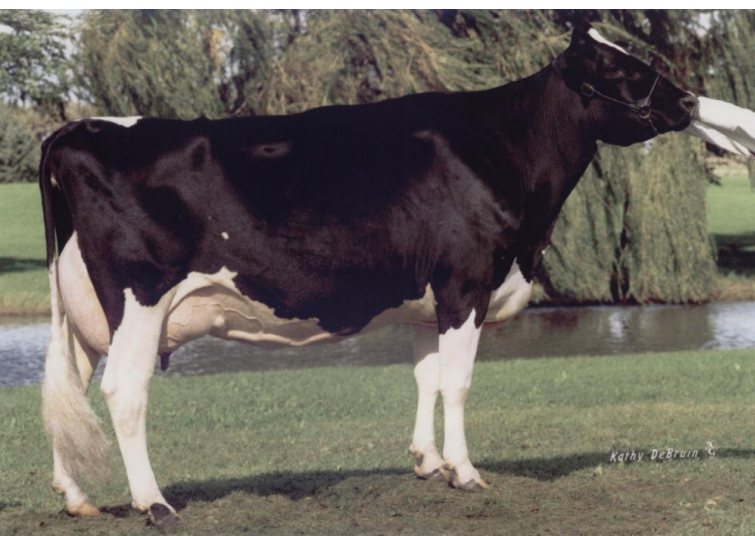


GP Charles

Charles is a top-class fitness and health specialist and a very good all-round sire. Charles transmits extraordinarily high daughter fertility and very good udder health and longevity as well as excellent health values. In addition, he transmits good production with positive components, a functional conformation with offspring that are not too tall, excellent suitability for AMS farms (RZRobot 121) and beta-casein A2A2.

Linear

Merkmal	ZW	Tendenz	88	112	124	Tendenz
Stature	97	small				tall
Rip structure	89	tight rib				open rib
Body depth	77	shallow				deep
Strength	91	frail				strong
Rump angle	93	high pins				sloped
Thurl width	92	narrow				wide
Rear legs side view	105	posty				sickled
Foot angle	94	flat				steep
Hock quality	100	coarse				dry
Rear legs rear view	93	hocked in				parallel
Front feet orientation	98	hocked in				parallel
Locomotion	98	poor				good
Rear udder height	100	deep				high
Udder cleft	96	weak				strong
Front teat placement	70	wide				close
Rear teat placement	95	wide				close
Fore udder attachment	102	loose				strong
Udder balance	103	ht				vt
Udder depth	124	deep				high
Teat length	120	short				long



Stammkuh: Snow-N Denises Dellia EX-95