

MADMAN

HB-Nr. 889665 • HO840003204327042

07.02.2021 aAa: 432 Beta casein: A2A2 Kappa casein: AB ZW: gen.US 04.2025 Breeder: WET, US

Pedigree

FANCA v. ST LUCIA
MELANIA GP-84
1. 11.784 4,7 550 3,5 414

RENEGADE v. JALTAOAK
MARGIE VG-86
1. 14.257 5,0 717 3,7 524

MATTERS
MAUD VG-85

Total index

TPI 3038

Production

Si. 82% NM 486

Milk	+632
Fat %	+0,14
Fat yield	+63
Protein %	+0,00
Protein yield	+21

Functionality

SCS	Somatic cell score	2.79
PL	Productive Life	2.70
DPR	Daughter Pregnancy Rate	0.20
MS	Melkbarkeit	94
SCE	Sire calving ease	2.5%
DCE	Daughter calving ease	1.3%

Health

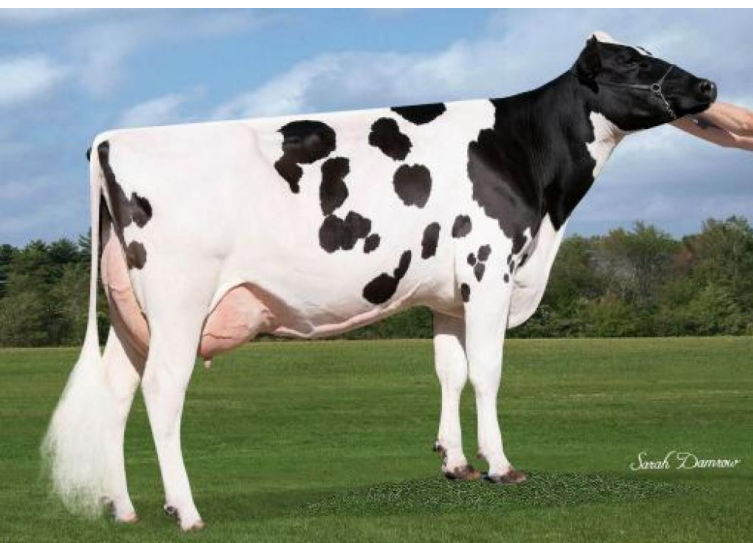
5

Mastitis	2.5
Ketosis	0.2
Metritis	0.7
Disp. Abomasum	0.1
Ret. Placenta	0.2

Exterieur

PTAT 1.14

DC	Dairy Character	0.28
BC	Body Composite	0.56
F&L	Feet & Legs	1.13
UDC	Udder	0.85



GGM: Wet Hotshot MAUD VG-85



WET Madman

MADMAN is a son of Faneca and comes from the Rud Zip/Robust Delicious cow family on his mother's side, which has produced countless successful insemination bulls. The different pedigree and the excellent inheritance profile make Madman doubly interesting. He impresses with very good milk production with positive components - a trademark of the mother's line. Very low somatic cell counts, beta-casein A2/A2 and consistently positive values in all fitness areas are impressive, as is the almost perfect linear profile. Wide, slightly sloping pelvises, slightly angled, completely parallel hind legs, a lot of dairy strength and very well attached udders with a strong central ligament mean that excellent freestall cows can be expected. Sire calving ease is average and the maternal calving process is rated very favorably.

Linear

	ZW	-2	2	
Stature	1.52	small		tall
Dairy character	0.66	tight rib		open rib
Body depth	0.24	shallow		deep
Strength	0.43	frail		strong
Rump angle	1.61	high pins		sloped
Thurl width	1.1	narrow		wide
Rear legs side view	0.72	posty		sickled
Foot angle	1.14	flat		steep
Rear legs rear view	1.7	hocked in		parallel
Rear udder height	1.05	deep		high
Udder cleft	0.63	weak		strong
Front teat placement	0.96	wide		close
Rear teat placement	0.74	wide		close
Fore udder attachment	0.91	loose		strong
Udder depth	1.38	deep		high
Teat length	-0.29	short		long