

# QUALITY Tö.

HB-Nr. 500871 • HO840003213892679

31.05.2020 aAa: 432 Beta casein: A2A2 Kappa casein: BB ZW: gen.US 04.2026 Breeder: Jook, US

## Pedigree

EINSTEIN v. TOPNOTCH  
JULIE  
1. 14.760 3,7 543 2,9 431

RAGEN v. STOIC  
MONTROSS 42390

MONTROSS  
SUPERSIRE 36193

## Total index

**TPI 3096**

### Production

Si. 96% NM 656

Milk	+1608
Fat %	-0,04
Fat yield	+55
Protein %	-0,06
Protein yield	+37

### Functionality

SCS	Somatic cell score	2.79
PL	Productive Life	4.20
DPR	Daughter Pregnancy Rate	-0.10
MS	Melkbarkeit	6.9
SCE	Sire calving ease	1.5%
DCE	Daughter calving ease	1.6%

### Health

**2.4**

Mastitis	0.4
Ketosis	1
Metritis	1
Disp. Abomasum	0.2
Ret. Placenta	0.1

### Exterieur

**PTAT 0.87**

DC	Dairy Character	-0.42
BC	Body Composite	-0.49
F&L	Feet & Legs	0.18
UDC	Udder	1.28

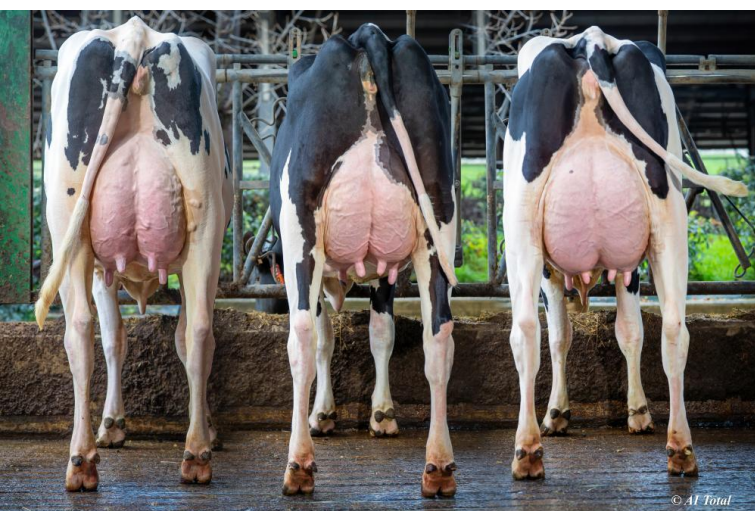


Jook Einstein QUALITY

Quality is a son of Silverridge Einstein, who impresses with his daughters and is increasingly gaining a reputation as a sire of bulls. In the maternal line, Quality comes from the same family as T-Spruce Lionel, which demonstrates the family's ability to transmit high production. With 3096 GTPI, Quality is an outstanding all-rounder with very high milk yield and good components (plus beta-casein A2/A2 and kappa-casein BB), excellent udder health, daughter fertility and longevity, as well as easy births. The daughters are average in size, have open ribs, broad rumps, and very good feet & legs. The high-attached udders have a very firm suspensive ligament and longer, centrally placed teats. With additional daughters in milk, Quality is recording a further increase in his breeding values and is becoming increasingly important for breeders of profitable freestall cows..

### Linear

	ZW	-2	2
Stature	-0.66	small	tall
Dairy character	0.62	tight rib	open rib
Body depth	-0.55	shallow	deep
Strength	-0.53	frail	strong
Rump angle	-0.35	high pins	sloped
Thurl width	0.52	narrow	wide
Rear legs side view	-0.01	posty	sickled
Foot angle	-0.19	flat	steep
Rear legs rear view	-0.33	hocked in	parallel
Rear udder height	1.46	deep	high
Udder cleft	1.4	weak	strong
Front teat placement	0.87	wide	close
Rear teat placement	1.06	wide	close
Fore udder attachment	0.54	loose	strong
Udder depth	0.04	deep	high
Teat length	0.44	short	long



Quality T?chtergruppe Gan. Etxeberri, Spanien