

# MASERATI

HB-Nr. 575135 • HODEU000124490412

18.05.2021 aAa: 234 Beta casein: A1A1 Kappa casein: BE ZW: gen.US 08.2024 Breeder: Bewersdorf

## Pedigree

MANHATTAN v. POSITIVE  
HAH HAZEL GP-84

PROSPEROUS v. MAGNUS  
WIL HERRIET VG-86  
2. 12.372 4,44 549 3,73 462

EUCLID  
HONIG VG-89

## Total index

TPI 2839

### Production

Si. 81%

NM 719

Milk	+1335
Fat %	+0,12
Fat yield	+84
Protein %	+0,06
Protein yield	+59

### Functionality

SCS	Somatic cell score	2.66
PL	Productive Life	3.30
DPR	Daughter Pregnancy Rate	-1.30
MS	Melkbarkeit	100
SCE	Sire calving ease	2.3%
DCE	Daughter calving ease	2.4%

### Health

6.9

Mastitis	3.0
Ketosis	2.1
Metritis	1.1
Disp. Abomasum	0.3
Ret. Placenta	0.0

### Exterieur

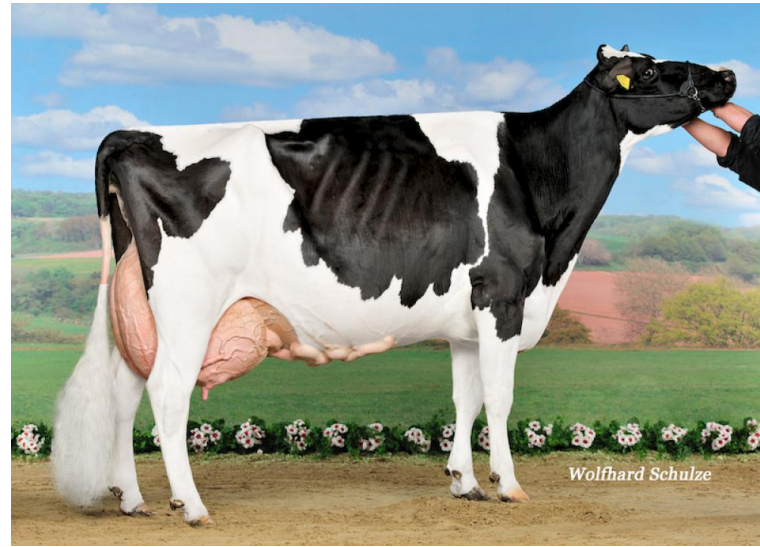
PTAT 1.68

DC	Dairy Character	1.04
BC	Body Composite	1.03
F&L	Feet & Legs	-0.07
UDC	Udder	1.92



Alex Arkink

HaH Maserati



Wolfhard Schulze

Stammkuh: Batke Outside Kora EX-94

HaH Maserati from the Bewersdorf breeder is one of the few available sons of the Canadian top sire Manhattan in Europe and goes back to the European Champion (2yr) Batke Outside Kora EX-94. Maserati particularly convinces with a good production with high components, excellent udder health, long productive life and a flawless conformation with strengths in the body, sloping rumps and very good udder transmission. Through his extraordinary sire stack and as an attractive all-rounder Maserati can be randomly used.

### Linear

	ZW	-2	2	
Stature	1.88	small		tall
Dairy character	1.15	tight rib		open rib
Body depth	0.86	shallow		deep
Strength	1.05	frail		strong
Rump angle	1.48	high pins		sloped
Thurl width	1.86	narrow		wide
Rear legs side view	-0.57	posty		sickled
Foot angle	1.03	flat		steep
Rear legs rear view	0.02	hocked in		parallel
Rear udder height	2.49	deep		high
Udder cleft	0.39	weak		strong
Front teat placement	0.98	wide		close
Rear teat placement	0.60	wide		close
Fore udder attachment	2.71	loose		strong
Udder depth	2.02	deep		high
Teat length	-0.47	short		long