

# NETFLIX PP RF

HB-Nr. NEU • HODEU000365457510

07.12.2023 aAa: - Beta casein: A1A2 Kappa casein: BB ZW: gen.US 12.2024 Breeder: Schlößler

## Pedigree

SPEEDY P v. ALTAZZAZZLE  
NICKIE

KITAMI PP RF v. HOTSPOT P

MISSION P  
ANDORRA

## Total index

TPI 2738

### Production

Si. 79%

NM 752

Milk	+1262
Fat %	+0,05
Fat yield	+62
Protein %	+0,07
Protein yield	+58

### Functionality

SCS	Somatic cell score	2.82
PL	Productive Life	2.90
DPR	Daughter Pregnancy Rate	-0.30
MS	Melkbarkeit	99
SCE	Sire calving ease	1.5%
DCE	Daughter calving ease	2.1%

### Health

5.2

Mastitis	1.8
Ketosis	1.3
Metritis	2
Disp. Abomasum	0
Ret. Placenta	-0.1

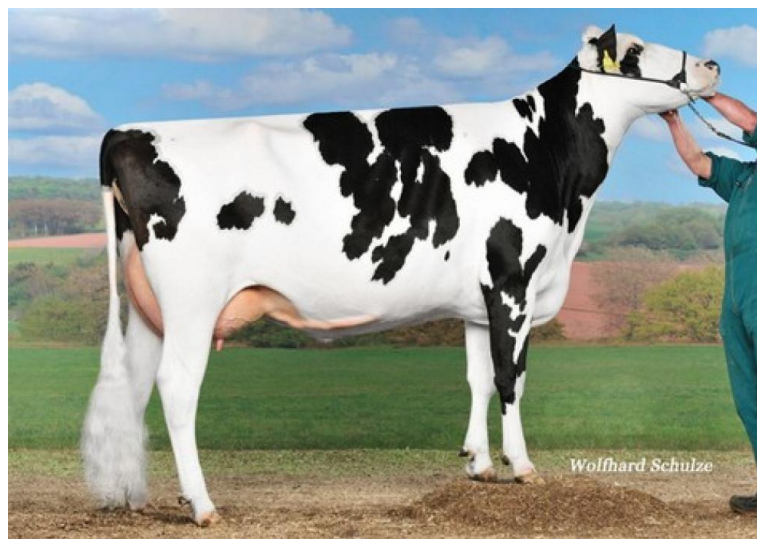
### Exterieur

PTAT 1.32

DC	Dairy Character	0.22
BC	Body Composite	-0.74
F&L	Feet & Legs	-0.07
UDC	Udder	1.22



4M: MR Snow Aida VG-86



5M: Teemar Observer Airline VG-85

Netflix PP RC is an early Speedy son who goes back via the outcross sire Kitami to the very influential family of MR Snow Aida VG-86 (Dixie-Lee Aspen EX-92), from which a number of insemination bulls have already been used at home and abroad. Netflix himself convinces with a high production with positive components, a good longevity as well as an attractive conformation with sloping rumps, the slightly angled hind legs often sought after for compensation and very good udder inheritance with longer teats. Due to very easy births, Netflix can be used well on heifers. As the red factor has been passed down through generations of sbt. ancestors, Netflix is also an interesting option for Rbt. breeding. Netflix is not out of ET and tests kappa-casein BB.

### Linear

	ZW	-2	2	
Stature	0.77	small		tall
Dairy character	1.4	tight rib		open rib
Body depth	-0.03	shallow		deep
Strength	-0.35	frail		strong
Rump angle	1.15	high pins		sloped
Thurl width	-0.01	narrow		wide
Rear legs side view	0.4	posty		sickled
Foot angle	-0.09	flat		steep
Rear legs rear view	-0.16	hocked in		parallel
Rear udder height	1.79	deep		high
Udder cleft	0.41	weak		strong
Front teat placement	-0.33	wide		close
Rear teat placement	0.2	wide		close
Fore udder attachment	1.57	loose		strong
Udder depth	1.19	deep		high
Teat length	0.54	short		long