

# BOLOGNA

HB-Nr. 499322 • HODEU000365902241

24.10.2023 aAa: - Beta casein: A1A2 Kappa casein: BB ZW: gen.US 12.2024 Breeder: J. Melbaum

## Pedigree

|  |   |                          |
|--|---|--------------------------|
| BOSVITO v. BOSÄ<br>GEILES GERÄT VG-85<br>1. 100 T. 3.678 4,81 177 3,59 132 | GAMEDAY v. BIG AL<br>PINE-TREE 5654 GP-83<br>2. 10.424 5,5 570 3,8% 397 | LEGACY<br>GRACEFUL VG-85 |
|--|---|--------------------------|

## Total index

TPI 3148

### Production

Si. 79% NM 1140

|               |       |
|---------------|-------|
| Milk          | +1300 |
| Fat %         | +0,24 |
| Fat yield     | +114  |
| Protein %     | +0,09 |
| Protein yield | +65   |

### Functionality

|     |                         |       |
|-----|-------------------------|-------|
| SCS | Somatic cell score      | 2.62  |
| PL  | Productive Life         | 6.10  |
| DPR | Daughter Pregnancy Rate | -1.80 |
| MS  | Melkbarkeit             | 103   |
| SCE | Sire calving ease       | 2%    |
| DCE | Daughter calving ease   | 2%    |

### Health

8.2

|                |     |
|----------------|-----|
| Mastitis       | 2.9 |
| Ketosis        | 1.1 |
| Metritis       | 1.9 |
| Disp. Abomasum | 0.5 |
| Ret. Placenta  | 0.5 |

### Exterieur

PTAT 2.12

|     |                 |       |
|-----|-----------------|-------|
| DC  | Dairy Character | 1.06  |
| BC  | Body Composite  | -0.45 |
| F&L | Feet & Legs     | -0.04 |
| UDC | Udder           | 2.34  |

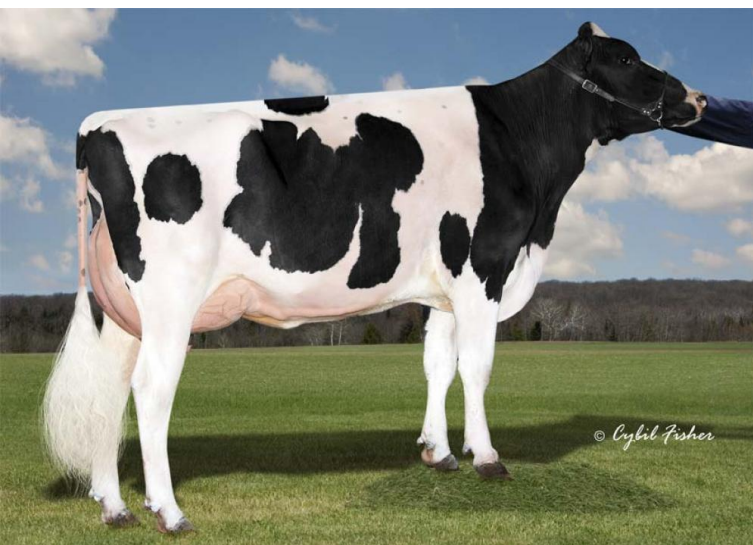


Mutter: Danhof Gameday Geiles Gerät VG-85

Bologna is a full brother of Bergamo and, like Bergamo, connects the cow families of Dellia EX 95 with Rotate Gaiety EX 90 (our perennial favorite Glamour Red also comes from this family) via his sire Bosvito, who comes from three generations of EX classified dams from the Cookiecutter MOM Halo family, with the Gameday dam, who was one of the highest breeding cattle according to TPI of her year in Europe and is now classified VG- 85 (86 udder - 86 feet & legs). Bologna's dam goes back over eight generations of VG or EX classified dams to Schillview Mtoto Gladd VG-88. Bologna himself is a very attractive all-rounder with a top performance with high components, very high longevity, very good cell values with positive milkability and excellent health values. Bologna also passes on very good conformation with lots of milk type, wide rumps, good feet & legs and excellent udder inheritance. Bologna can be used for heifer inseminations and tests Kappa-casein BB.

### Linear

|                       | ZW    | -2        | 2 |          |
|-----------------------|-------|-----------|---|----------|
| Stature               | 1.69  | small     |   | tall     |
| Dairy character       | 2.46  | tight rib |   | open rib |
| Body depth            | 0.37  | shallow   |   | deep     |
| Strength              | 0     | frail     |   | strong   |
| Rump angle            | -0.51 | high pins |   | sloped   |
| Thurl width           | 1.7   | narrow    |   | wide     |
| Rear legs side view   | 0.68  | posty     |   | sickled  |
| Foot angle            | 0.46  | flat      |   | steep    |
| Rear legs rear view   | -0.12 | hocked in |   | parallel |
| Rear udder height     | 3.07  | deep      |   | high     |
| Udder cleft           | 1.47  | weak      |   | strong   |
| Front teat placement  | 1.63  | wide      |   | close    |
| Rear teat placement   | 1.56  | wide      |   | close    |
| Fore udder attachment | 2.7   | loose     |   | strong   |
| Udder depth           | 1.94  | deep      |   | high     |
| Teat length           | -0.33 | short     |   | long     |



V-3M: Cookiecutter Rubi Homey EX-91