

FABIO

HB-Nr. 499206 • HODEU000541365139

15.01.2021 aAa: 423 Beta casein: A2A2 Kappa casein: AA ZW: gen.US 04.2026 Breeder: Holtkamp

Pedigree

FASTBALL v. FRAZZLED
SHA FISI VG-86

1.305 10.643 4,43 471 3,40 362

DYNAMO v. RUBICON
FOSSA VG-87

GATEDANCER
SILVER VG85

Total index

TPI 2887

Production

Si. 81%

NM 532

Milk	+801
Fat %	+0,05
Fat yield	+48
Protein %	+0,00
Protein yield	+27

Functionality

SCS	Somatic cell score	2.94
PL	Productive Life	2.20
DPR	Daughter Pregnancy Rate	-1.50
MS	Melkbarkeit	7.2
SCE	Sire calving ease	1.4%
DCE	Daughter calving ease	1.8%

Health

1.3

Mastitis	-0.8
Ketosis	1.6
Metritis	0.6
Disp. Abomasum	0.7
Ret. Placenta	0

Exterieur

PTAT 0.14

DC	Dairy Character	-1.02
BC	Body Composite	-0.55
F&L	Feet & Legs	0.09
UDC	Udder	0.44

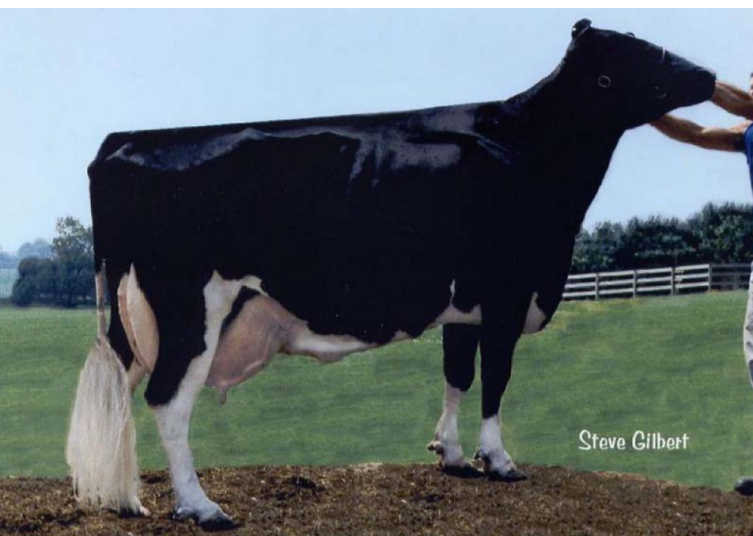


Wilder FABIO

Fabio comes from the Holtkamp breeding farm and is one of the tallest fastball sons in Europe. His mother SHA Fisi was sold at the Exclusive Sale 2019 and goes back to the legendary Wesswood-HC Rudy Missy EX-92 family. Fabio convinces with easy births, excellent production with high components plus beta-casein A2/A2, above-average milkability with good udder health and a long useful life. His daughters will be of average height and have correct rumps and very good feet and legs with parallel, optimally angled hind legs and high heels. Highlights are the high attached udders with somewhat longer, centrally placed teats and a good suspensory ligament.

Linear

	ZW	-2	2
Stature	-0.56	small	tall
Dairy character	-0.2	tight rib	open rib
Body depth	-0.73	shallow	deep
Strength	-0.54	frail	strong
Rump angle	-0.18	high pins	sloped
Thurl width	-0.26	narrow	wide
Rear legs side view	-0.15	posty	sickled
Foot angle	-0.23	flat	steep
Rear legs rear view	0.2	hocked in	parallel
Rear udder height	0.65	deep	high
Udder cleft	0.61	weak	strong
Front teat placement	-0.05	wide	close
Rear teat placement	0.4	wide	close
Fore udder attachment	0.09	loose	strong
Udder depth	0.32	deep	high
Teat length	0.54	short	long



Stammkuh: Wesswood-HC Rudy Missy EX-92